

# ENCLOSED REELS AIR/WATER - OIL - GREASE

# RETRACTA®

## INSTRUCTION MANUAL

Auto-Rewind Hose Reels

### INTRODUCTION

The Retracta range of enclosed metal hose reels have been designed using the highest quality materials and are fitted with purpose specific hoses and swivels. Models available for Air/Water, Oil and Grease.

Please read and retain this instruction manual to assist you in the operation and maintenance of this quality product.

### GENERAL INFORMATION

The information contained in this instruction manual will help ensure many years of trouble free operation.

Please take a few moments to read through this instruction manual before installing your new enclosed hose reel. If you require further assistance please contact your nearest Macnaught distributor or Authorised Macnaught Service Centre.

### IMPORTANT INFORMATION



**READ THIS INFORMATION  
CAREFULLY BEFORE USE.**

Your safety is important to us. Please read and follow all safety instructions listed inside.

Some of these instructions alert you to the potential for personal injury. "Cautions" listed throughout this manual advise of potential practices or procedures which may cause damage to your equipment.

Ensure all operators have access to adequate instructions about safe operating and maintenance procedures.

1) Make sure the line pressure does not exceed the rated operating pressure of your model hose reel.

(Refer specifications listed in this instruction manual)

2) Exposure of the skin directly to pressurised air or fluid could result in severe bodily injury.

3) Before carrying out any maintenance turn off and disconnect the supply line to the reel and carefully release the hose line pressure.

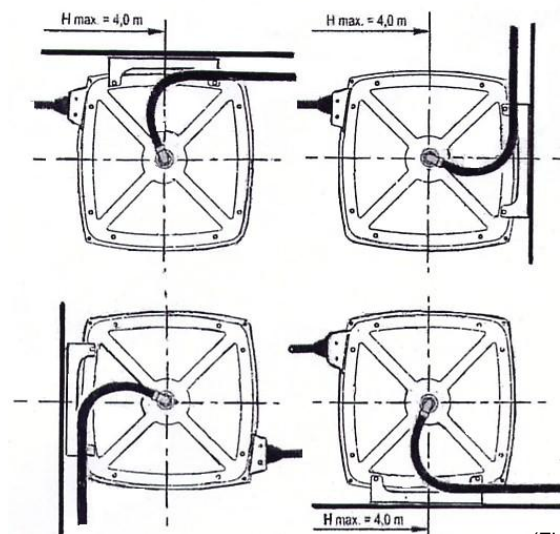
4) Use soap and water when checking for leaks.



### MOUNTING INSTRUCTIONS

The reel can be wall, floor or ceiling mounted according to the pictures (Fig 1). Choose a way of mounting to avoid excessive bending of the hose against the outlet rollers.

Select a level surface to mount the reel. Mark the location holes for the bracket. Ensure that suitable fixing bolts are used and that they are secure. The bolts must each stand a torque force of minimum 3800 N.



(Fig 1)

Maximum mounting height is (4m)

## CONNECTION TO PIPEWORK

- 1) The connect the reel inlet hose to the supply pipe with a minimum hose length of 1m
- 2) Check that the hose is not twisted or strained after connection.

Note: An isolation stop valve should be fitted on the pipes system before the hose connection.

## LATCHING AND REWINDING OPERATION

- A) To latch, pull the hose out to the required length, a series of clicks will be heard, slowly allow the hose to retract against the latch.
- B) To unlatch, pull the hose out until the clicking stops, slowly retract the hose until the stopper rests against the reel mouth.



### CAUTION

To prevent injury or damage occurring, do not let go of the hose during rewinding.



## SPRING TENSION ADJUSTMENT

### INCREASE SPRING TENSION

- 1) Release and hold lock nut
- 2) Turn screw clockwise to add spring tension
- 3) Re-tighten lock nut



### DECREASE SPRING TENSION

- 1) Release and hold lock nut
- 2) Turn screw anti-clockwise to reduce spring tension
- 3) Re-tighten lock nut



## MAINTENANCE



### CAUTION

The following checks to be carried out at least once a year.

Turn off and disconnect the supply line before carrying out any maintenance.

- 1) Check that the spring recoils properly.
- 2) Check for any sings of leakage from swivel or hose connections. Repair or replace as required
- 3) Check hose for damage. Replace hose if found to be damaged.
- 4) Check latch mechanism is functioning correctly.
- 5) Check the reel is fixed securely to wall or ceiling.

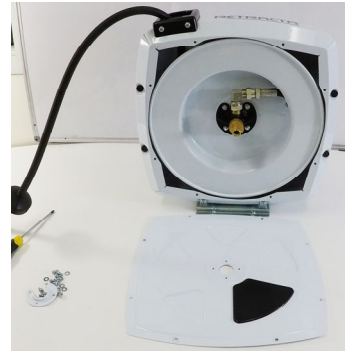
## HOSE REPLACEMENT



### CAUTION

Turn off and disconnect the supply line before carrying out any maintenance.

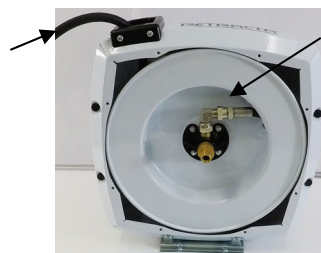
- 1) Remove inlet hose from the side of the reel
- 2) Pull hose all the way out and allow to latch
- 3) Remove inlet side cover



- 4) Using 2 spanners unscrew and remove hose assembly.



- 5) Slide new hose through mouth of the reel, pull hose through drum opening and securely attach to the swivel fitting.



6) Refit the inlet side cover, fit hose stopper close to the end of the hose, unlatch hose assembly and carefully recoil hose into reel.

7) Fit inlet hose, turn on supply and check connections for any leaks.

## REPLACE SWIVEL SEALS

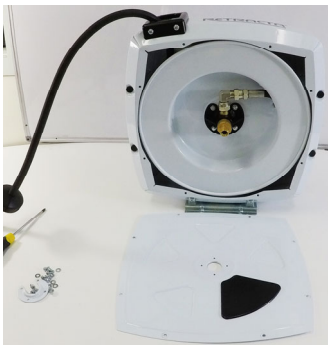
### CAUTION

Turn off and disconnect the supply line before carrying out any maintenance.

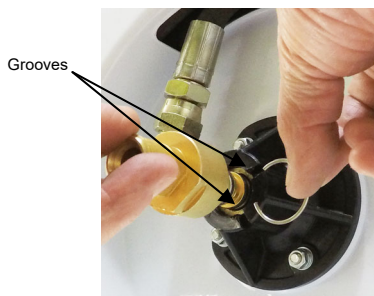
- 1) Remove inlet hose from the side of the reel
- 2) Pull hose all the way out and allow to latch



3) Remove inlet side cover



4) Using 2 small flat headed screwdrivers depress the "C" ring through the grooves in the swivel body and carefully remove the swivel shaft



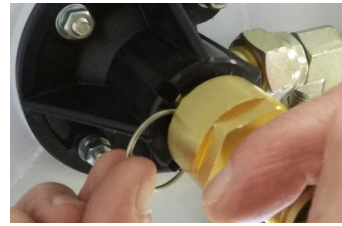
5) Carefully remove the old seal .  
**(Do not score or mark the swivel shaft)**

6) Carefully fit new seals and backup rings.



7) Lightly grease the swivel shaft before re-assembly.

8) Slide swivel shaft into position and push the "C" clip back into the groove in the swivel body



9) Refit the inlet side cover, unlatch hose assembly and carefully recoil hose into reel.

10) Re-fit inlet hose, turn on supply and check connections for any leaks.

## REPLACE LATCH ASSEMBLY

1) Remove spring tension, locknut and washers



2) Remove latch side cover screws and remove side



3) Replace any worn or broken parts as required

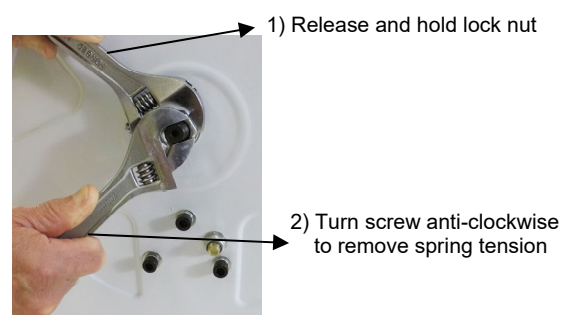
4) Re-fit sideplate, washers and locknut, then add spring tension as required.(refer to "spring tension adjustment")

## MAIN SPRING REMOVAL/REPLACEMENT

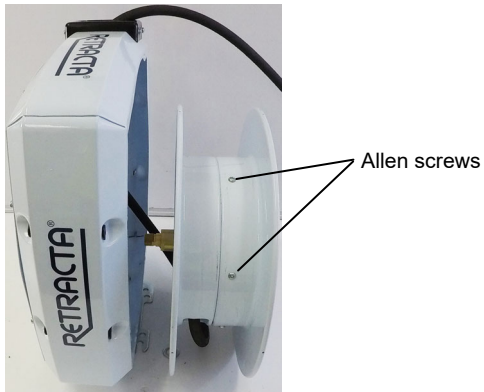
### CAUTION

Turn off and disconnect the supply line before carrying out any maintenance.

1) Remove spring tension, locknut and washers



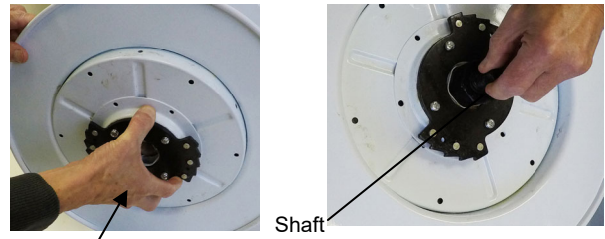
- 2) Pull hose assembly out through the mouth reel.
- 3) Remove latch side cover.
- 4) Pull the drum assembly out the side of the housing



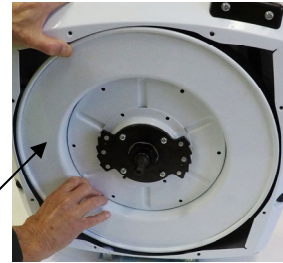
- 5) Remove the allen screws from drum assembly.
- 6) Carefully remove spring cover from drum.



- 6) Carefully lift out spring and shaft from drum.



- 3) Hold the spring and cover in position, refit allen screws to securely lock assembly into position.



- 4) Slide the drum assembly into position.
- 5) Manually rotate drum clockwise and recoil hose back into reel.
- 6) Refit side cover, shaft washers and locknut.
- 7) Apply adequate spring tension to reel.

- 1) Release and hold lock nut
- 2) Turn screw clockwise to add spring tension
- 3) Re-tighten lock nut

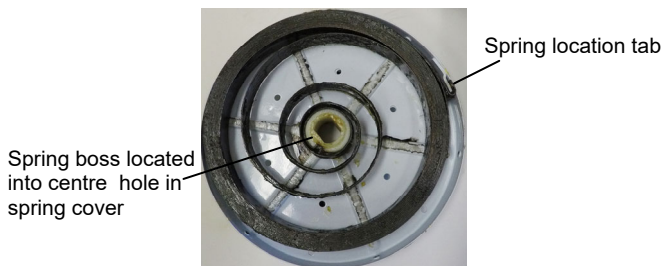


## FIT MAIN SPRING

- 1) Carefully insert replacement spring into cover.

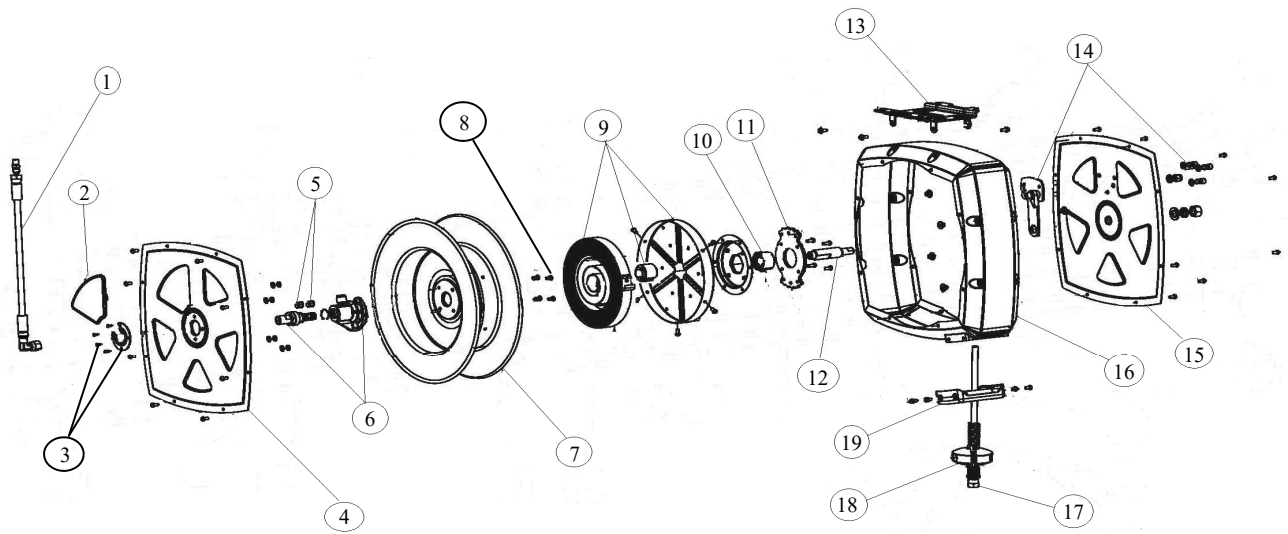
### Note:

- a) Spring end to be located into spring location tab.
- b) Spring boss to be located into centre hole in



- 2) Carefully insert spring and cover into drum, and then slide shaft into position.

## SPARE PARTS DIAGRAM



## PARTS List

1	Feeder Hose Assembly	11	Latch ratchet plate
2	Inspection cover	12	Main shaft
3	Bolt & Tension plate set	13	Bracket
4	Swivel side cover plate	14	Latch set
5	Swivel seals	15	Latch side cover plate
6	Swivel assembly	16	Main body housing
7	Drum	17	Hose Assembly
8	Swivel retaining screws	18	Hose Stopper
9	Main spring and cover assembly	19	Roller guide assembly
10	Bearing assembly		

## AVAILABLE SPARE PARTS

5	Swivel seal set
6	Swivel set (includes seals)
9	Main spring and cover assembly
14	Latch set
17	Hose assembly
18	Hose stopper
19	Roller guide assembly

## TROUBLE SHOOTING GUIDE

TROUBLE	CAUSE	REMEDY
Hose will not fully retract	a) Outlet nozzle, gun or tool is too heavy	a) Add spring tension. See "Spring Tension Adjustment"
	b) Main spring is fatigued	b) Add spring tension. See "Spring Tension Adjustment"
	c) Replacement hose is too long	c) Fit correct length hose (Refer hose to specifications)
Hose will not retract at all	a) Main spring is broken or has lost all tension.	a) Replace main spring assembly. See "Main Spring Removal/Replacement"
Reel will not latch	a) Incorrect operation	a) Reel latches on first, second or third "click". (After the third click the reel automatically rewinds)
	b) Latch assembly broken or worn	b) Replace latch assembly. See "Replace Latch assembly"
Fluid leaks from swivel	a) Swivel seals damaged or worn	a) Replace swivel seals. See "Replace Swivel Seals"

NOTES:



**Macnaught Pty Limited**  
ABN 66 000 075 785

41-49 Henderson Street  
Turrella NSW 2205 Sydney Australia  
Postal Address PO Box 90  
Amcliffe NSW 2205 Sydney Australia

**T:** +61 2 9567 0401  
**F:** +61 2 9597 7773  
**W:** [www.macnaught.com.au](http://www.macnaught.com.au)

**Note:**

This product should be disposed of according to all applicable local and national government environment regulations and guidelines.



**For Warranty Terms and Conditions see [macnaught.com.au](http://macnaught.com.au)**  
**For a list of Australian Service Centres see [macnaught.com.au](http://macnaught.com.au)**